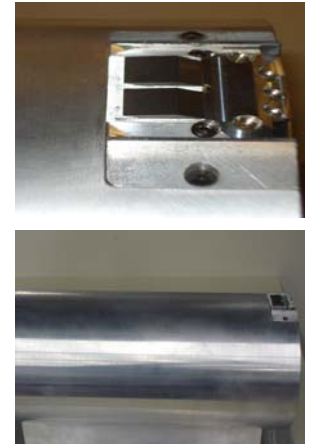
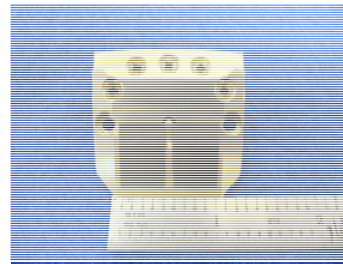


FRF-102 DATA SHEET

Description:

The FIRST RF Corporation FRF-102 is a broad band Ku through K band, high gain antenna. It may be mounted flat, or adapted to a radial curvature. In both instances the antenna is externally secured with standard #4-40 screws. The antenna produces high end fire gain from a conformal mounted antenna.



RF Performance Overview:

Frequency:

Ku through K Band

VSWR:

< 2.0:1

Impedance:

50 ohms

Antenna Gain:

10° Elevation +15dB to +20dB

Mechanical Overview:

Weight:

0.712oz (20.185g)

Physical Dimensions:

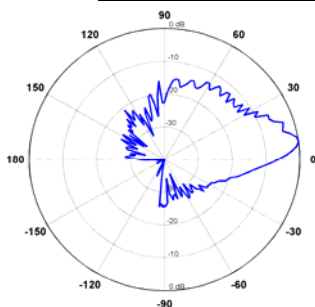
1.42" X 1.375" X.375"
 (antenna element only)

Connector:

SMA Jack (Female)

Typical Radiation Pattern(s):

Elevation Pattern Cut:



Azimuth Pattern Cut (10° Elevation):

